



we exceed >>

Metering Pumps & Systems

for your DOSING requirements

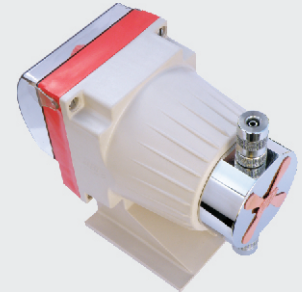
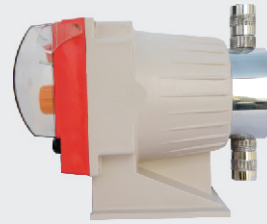
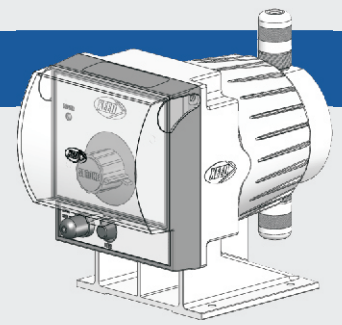


❖ Compact ❖ Sturdy ❖ Reliable ❖ Efficient ❖ Accurate ❖

KEED LIQUID CONTROLS PRIVATE LIMITED

An ISO 9001 Certified Company

XE Series Specifications



Type	Reciprocating diaphragm
Flow control	SPEED control
Mode	Manual / Automatic (optional):- Designed to accept 4-20mA current signal.
Packing dimension	L - 340mm x B - 320mm x H - 90mm

Performance Parameter

Steady state accuracy	± 1%
Linearity	± 3%
Repeatability	± 3%
Tolerance	- 5% to + 10% on the rated flow @ rated back pressure
Suction Lift	1.5 m of water column

End Connections

Injection check	1/2" NPT - M
-----------------	--------------

Pump Drive

Type	Electromagnetic Power Drive
Power supply	230V, 1 phase, 50Hz, AC

Material of Construction

Body	30% Glass filled Polypropylene (30% GFPP)	
Face plate	30% GFPP	
Splash guard	Polycarbonate	
Pump chamber	PP	SS 316
Suction check	PVC	SS 316
Delivery check	PVC	SS 316
Foot valve check	PVC	SS 316
Injection check	PVC	SS 316
Diaphragm	Teflon - Nitrile Composite	
Ball seat	Teflon	
Ball check	Ceramic	
Tubing	LDPE (3m) (OD - 9.5mm x ID - 6.35mm)	

Pump Color

Body	Special Brown
Face plate	Bright Red
Splash guard	Transparent

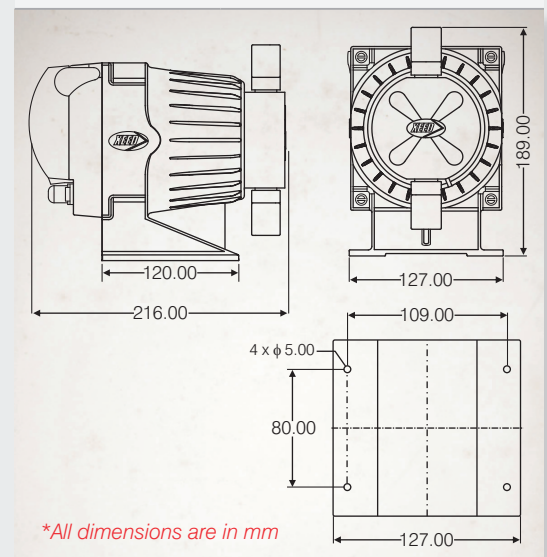
Low Level Switch

Model	LX
Type	Magnetic float type

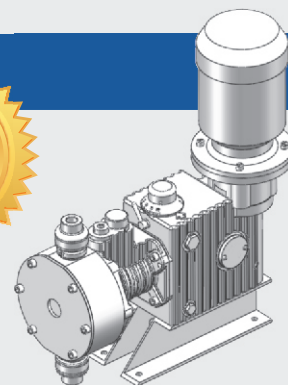
Material of Construction

Float	Polyurethane (PU)
Guide tube	PVC
Float Guard	PVC

Pump Dimensions



XH Series Specifications



Type	Hydraulically Actuated Diaphragm
Flow control	STROKE control
Mode	Manual / Automatic (optional):- Designed to accept 4-20mA current signal through VFD.
Packing dimension	L - 680mm x B - 380mm x H - 820mm

Performance Parameter

Steady state accuracy	± 1%
Linearity	± 3%
Repeatability	± 3%
Turndown Ratio	10:1
Suction condition	Flooded suction

End Connections

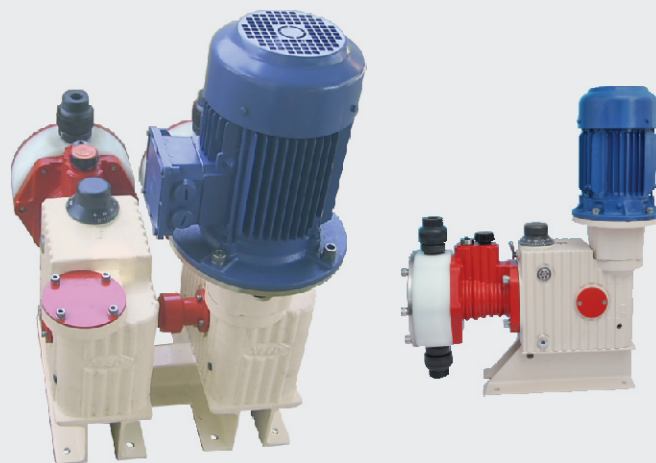
Injection check	1½" NPT - M (Plastic) 1" NPT - (Metallic)
'Y' Strainer	1½" NPT - F

Material of Construction

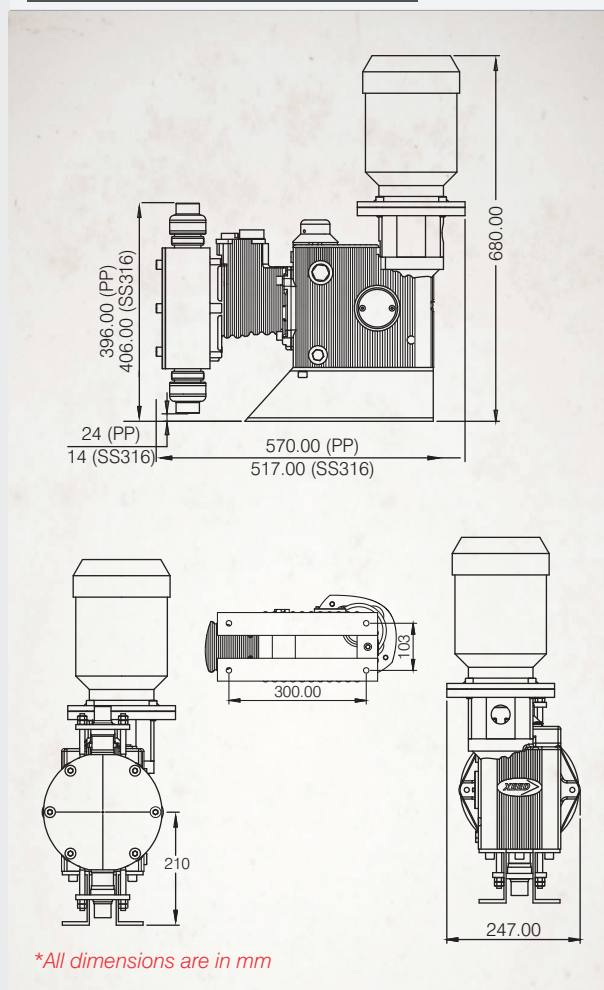
Body	CI - IS 210 FG260	
Hydraulic Chamber & Motor Adaptor	CI - IS 210 FG260	
Base	MS fabricated	
Pump chamber	PP	SS 316
Suction check	PVC	SS 316
Delivery check	PVC	SS 316
'Y' Strainer	PP	SS 316
Injection check	PVC	SS 316
Diaphragm	Teflon - Nitrile Composite	
Ball check	Glass	SS 316

Pump Drive

Type	TEFC induction motor - - Class 'F' Insulation
Rating	415V, 3 phase, 1400 rpm, 50Hz, AC supply



Pump Dimensions



XM Series Specifications

Type	Reciprocating diaphragm
Gear Ratio	10:1
Flow control	STROKE control
Mode	Manual / Automatic (optional):- Designed to accept 4-20mA current signal through VFD.
Packing dimension	L - 500mm x B - 325mm x H - 205mm

Performance Parameter

Steady state accuracy	± 1%
Linearity	± 3%
Repeatability	± 3%
Tolerance	- 5% to + 10% on the rated flow @ rated back pressure
Suction condition	Flooded suction

End Connections

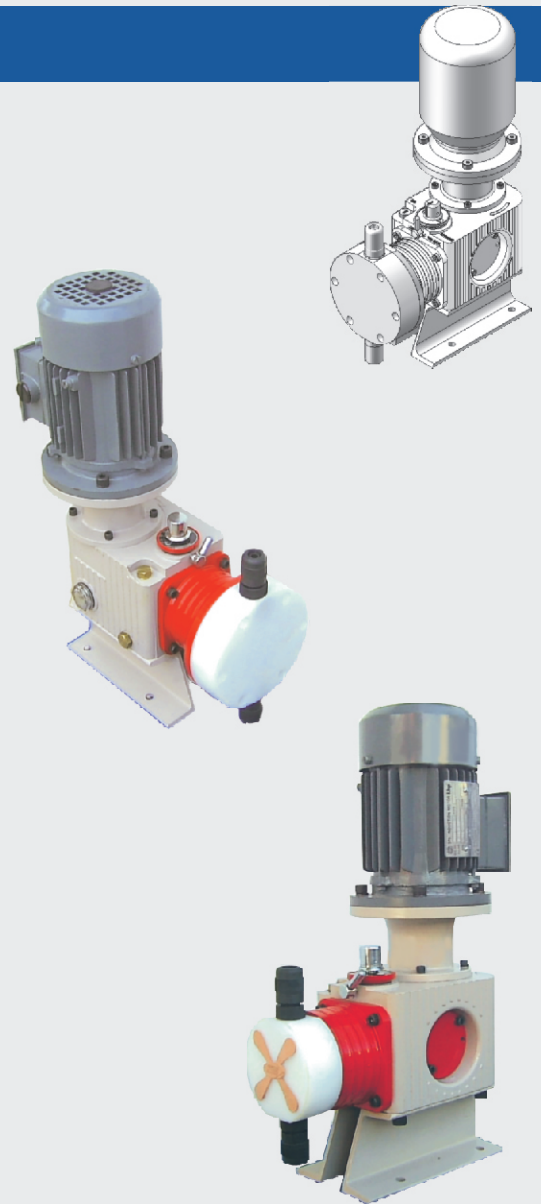
Injection check	1/2" NPT - M
'Y' Strainer	1/2" NPT - F

Material of Construction

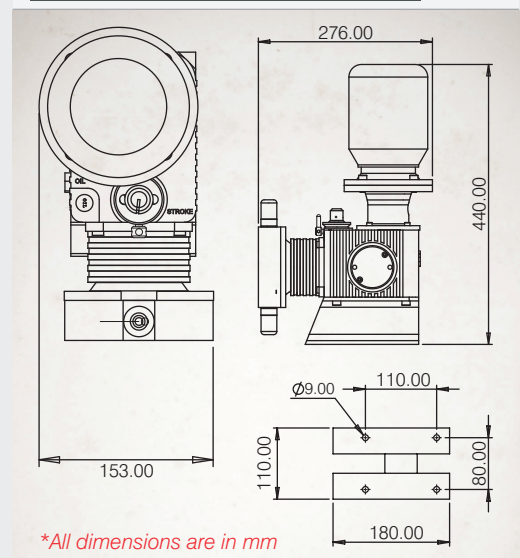
Body	Aluminium - LM4	
Liquid End Adaptor	CI - IS 210 FG260	
Motor Adaptor	Aluminium - LM4	
Base	MS fabricated	
Pump chamber	PP	SS 316
Suction check	PVC	SS 316
Delivery check	PVC	SS 316
'Y' Strainer	PP	SS 316
Injection check	PVC	SS 316
Ext. Pressure Relief Valve	PVC	SS 316
Diaphragm	Teflon - Nitrile Composite	
Ball seat	Teflon	
Ball check	Ceramic	
Tubing	LDPE (4m) (OD - 12.5mm x ID - 9.5mm)	

Pump Drive

Type	TEFC induction motor - Class 'F' Insulation
Power supply	0.25hp, 415V, 3 ph, 50Hz, 1440rpm, AC supply



Pump Dimensions



*All dimensions are in mm

Corporate Overview

- * XEED Liquid Controls, an ISO Certified company was established in 2009 at Chennai (Madras), India as a Private Limited Company to manufacture Metering Pumps and Systems for all dosing applications.
- * The Company manufactures chemical dosing pumps & systems ranging from 2 lph upto 3,000 lph across various pressures. These are reciprocating diaphragm pumps with electromagnetic drive or motor driven mechanically actuated or motor driven hydraulically actuated diaphragm pumps (XH Series - conforms to API 675 testing standards)
- * XEED dosing systems are operating at various locations across India and neighbouring countries. Since, the first pump sold in 2010, the Company has sold more than 3,000 pumps for different applications.
- * Products are manufactured with the best engineering practices which is reflected on the fact that the Company has bagged repeat orders from most of its customers.
- * The Company's core strength is its team with cumulative experience of over 50 years in this field.
- * Promoter's knowledge on product and market requirements have helped them to design robust, reliable & efficient products.

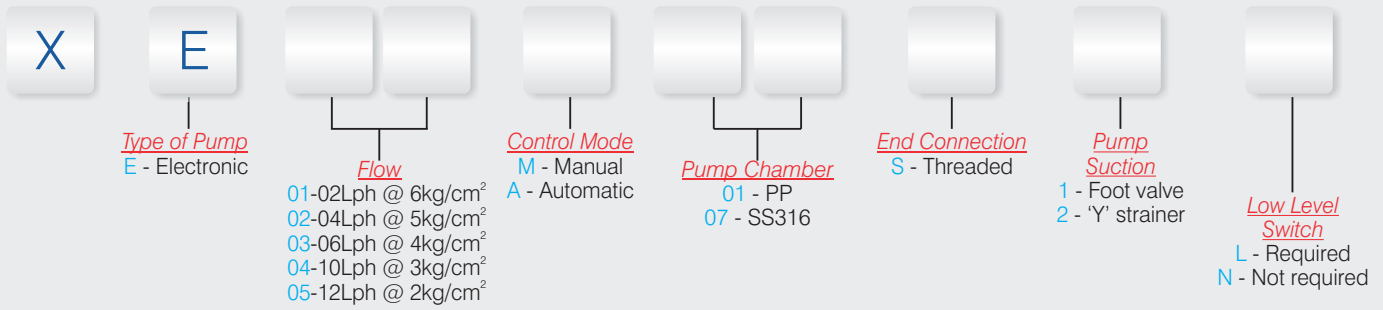
Applications

- * Raw water treatment, Cooling water treatment, Boiler water treatment, Effluent treatment, Sewage treatment, Public Health Engineering, Desalination / R.O. Systems.
- * Addition of Chemicals in Industrial sectors such as Power (Thermal/ Nuclear/ Gas), Cement, Steel, Sugar, Paper, Textile, Chemical & Petrochemical, Oil & Gas, LPG bottling plants, Mining, Metallurgy, Minerals, Heat Treatment, Food Processing, Rice Polishing, Dairy, Drugs & Pharmaceuticals, Breweries & Distilleries, Plastics, Automotive, Heavy Engineering, Swimming pools in hotels/ resorts/ apartments, etc.

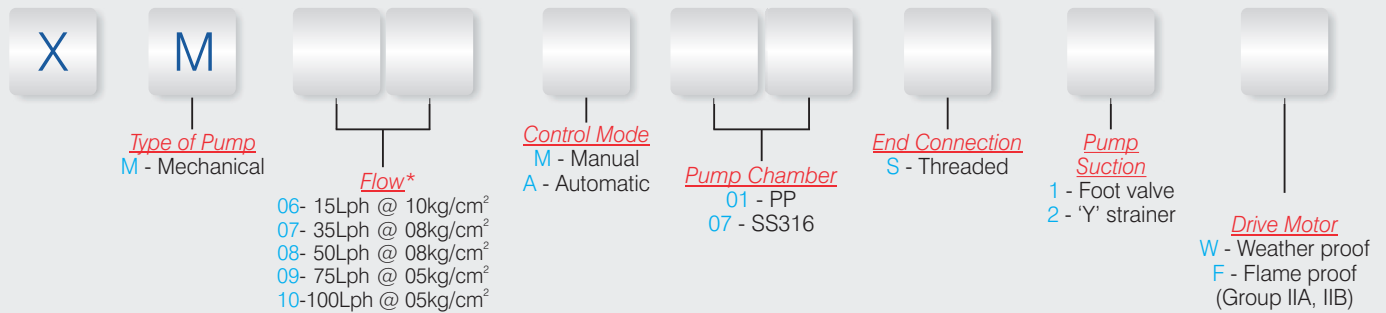
Advantages

- * XEED pumps are sturdy, compact and user friendly.
- * Unique Teflon - Nitrile composite diaphragm design ensures long life in XEED pumps for precise performance.
- * XEED pumps are energy efficient. Optimum motor selection results in less energy consumption.
- * XEED pumps are available in Manual mode (Standard) and Automatic mode (Optional).
- * XEED Electromagnetic pumps have Stroke frequency control as standard manual mode.
XEED motor driven pumps have Stroke length control as standard manual mode.
- * XEED pumps with Automatic mode are capable of accepting 4-20mA signal and dose proportionately.
- * XEED Electromagnetic pumps (XE Series) are provided with Splash guard.
- * XEED Electromagnetic pumps (XE Series) are provided with the following protection
Fuse – To take care of incoming current fluctuation
Varistor – To take care of voltage fluctuation
- * Flange mounted drive ensures a small foot-print for XEED motor driven pumps
- * Drive & Pump are integrated with love-joy coupling. Coupling is totally enclosed.
- * Twin Bearing Support (TBS) for precise & consistent operation. XEED pumps have sealed bearings.
- * Oil submerged lubrication for minimal wear and tear in motor driven pumps.
- * Adjustable internal relief valve is provided in Motor driven hydraulically actuated pumps (XH Series).
- * 3D Technology (Optional)– Diaphragm damage detector.
This involves a double diaphragm technology along with pressure gauge (for visual indication) or both pressure gauge and pressure switch for auto pump switch off.

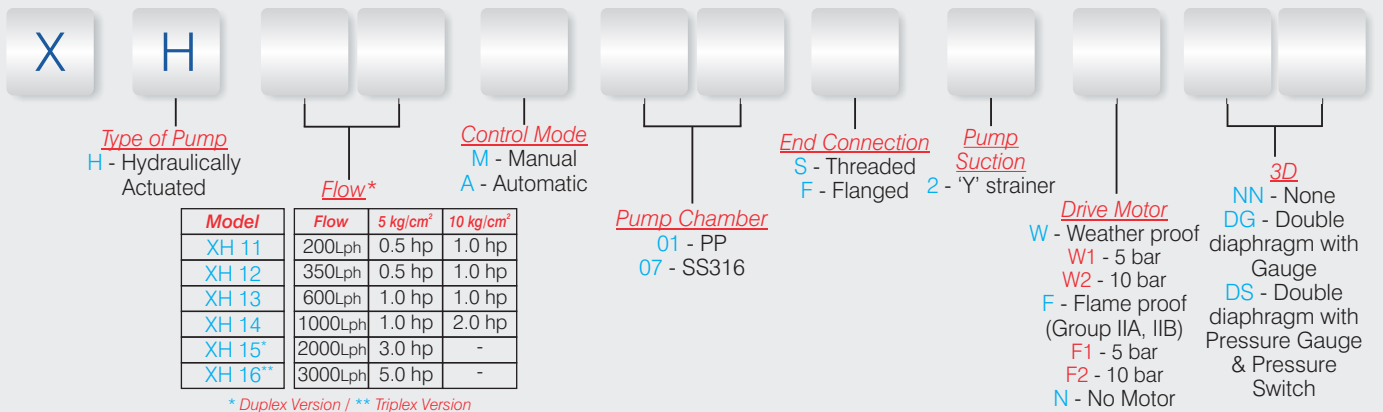
Pump Selector



Pump Selector



Pump Selector



* Duplex Version / ** Triplex Version



Head Office

Xeed Liquid Controls Pvt. Ltd.,
1 & 2, Arunagiri Street,
VGN Lakshmi Nagar,
Mugalivakkam,
Chennai - 600 125.
INDIA.

Contact

+91 94455 60704
+91 94455 60703
+91 94453 93702

sales@xeedlc.com
support@xeedlc.com
www.xeedlc.com

