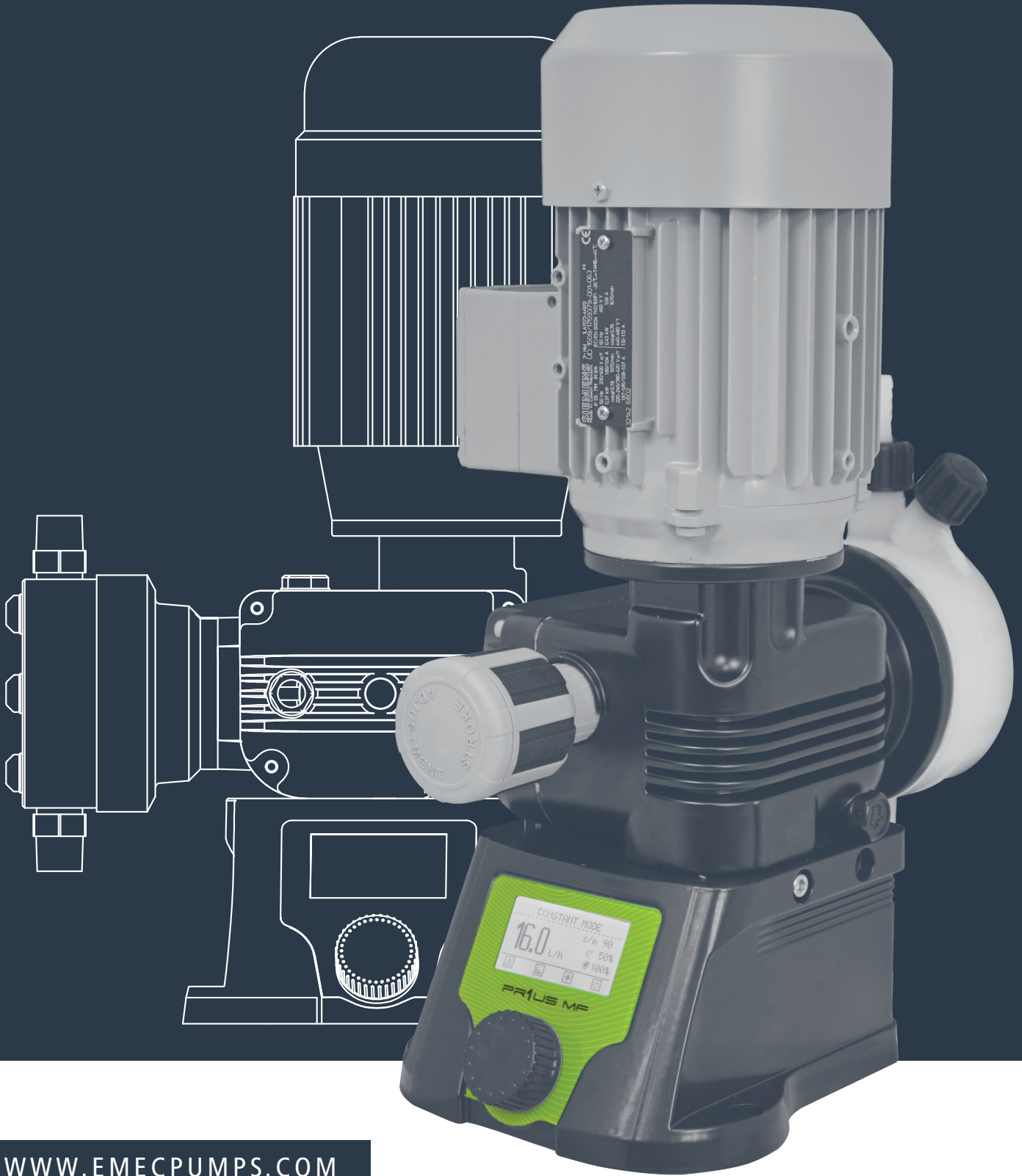
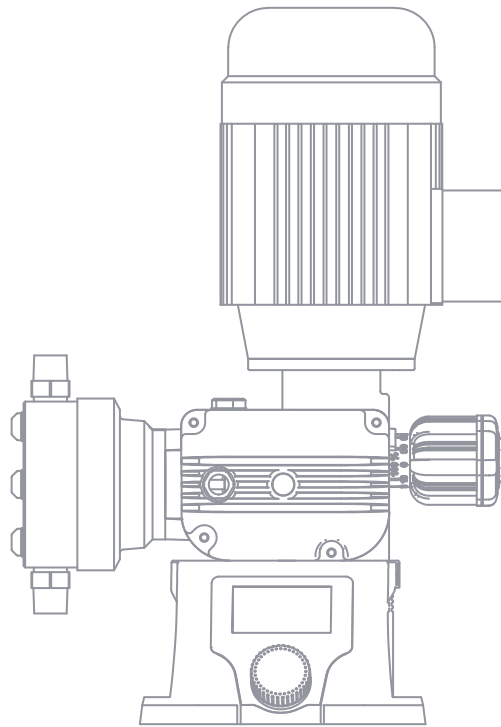


EMEC



WWW.EMECPUMPS.COM

PR1US



PR1US

EMEC

Chemical dosing and control equipments



EMEC

Chemical dosing and control equipments



MADE IN ITALY

All our products are manufactured in our factory in Italy.



WARRANTY

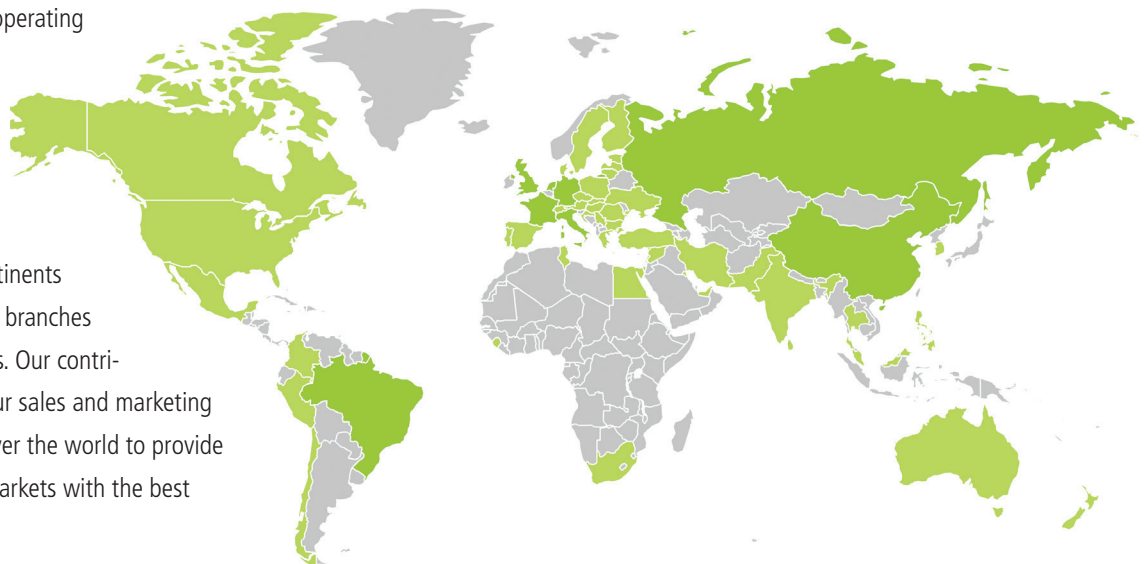
All our solenoid pump membrane have 5 years warranty.

EMEC WORLDWIDE

Always near to our customers

EMEC is a family-run company with a global nature, operating worldwide to serve and help our customers in many countries.

We are in all continents with many EMEC branches and many dealers. Our contributors work in our sales and marketing field offices all over the world to provide customers and markets with the best support.



DISCOVER EMEC

CONSTANLY EVOLVING

Our 35-year industrial footing has bred constant improvements in all our products, expanding range and functions. Our range of products is currently implemented in a broad range of settings:

- Swimming Pools
- Prevention Of Legionellosis
- Oil Industry
- Chemical Industry
- Food Industry
- Beverage Industry
- Aquariums & Zoos
- Hotels & Resorts
- Spas
- Industrial Water Treatment
- Potable Water Treatment
- Hospitals
- Cooling Towers
- Fertigation
- Car Wash
- Livestock farming

THIRTY-FIVE YEARS OF LEADERSHIP

EMEC ranks among Italy's top, consolidated industrial actors in the field of electronic control systems for fluids metering and management applications. Our products are designed and manufactured for both industrial and small-scale applications. We are an all-Italian business entity with a clear strategic outlook, right from the outset, striving to merge design innovation with a long-term industrial footing. Our high-precision, hi-reliability products are entirely designed and assembled at our Rieti facilities. EMEC's reputation as a market leader is expanding both in Italy and internationally, boosting demand for our quality, Italian designer products.

QUALITY FIRST

Our products are supported by passion and a solid industrial background. At EMEC, we have always sought to identify and seize investment opportunities, committing our resources to technology and human resources. That key to our success - and what sets us apart from market competitors - is our complete control of the production cycle, reliant on specialist business set-ups and resources. Our approach feeds into all aspect ahead of end product delivery: systems design, component production and assembly, software programming and final testing. In line with total quality commitments, we provide installation and maintenance specialists with up-to-date training for both our household and industrial products. Our retail and commercial units operate with a technical mindset, encompassing a firm grounding in all aspects of design and production; as such, they stimulate product innovation and enhancements based on Customer requirements, feedback and field experience. That approach makes us ideal partners when it comes to delivering targeted solutions to specific requirements. Our claims are anything but overstated: complete control, to us, is the only viable approach to ensuring total product quality and effective service delivery.

SUSTAINABILITY

Respecting and safeguarding the environment are the core values underpinning our business. In keeping with that commitment we engage in and promote all actions designed to curb the environmental impact of our processes, products and raw materials, on a life-cycle basis. Our company implements an Environmental Management System compliant with UNI EN ISO 14001 standards, subject to ongoing updates. Our goal is to curb atmospheric emissions, rationalise water consumption and enact appropriate waste management policies. Environmental impact assessments cover new products, process innovations and public tenders. We are committed to providing our employees and staff with appropriate information and training concerning our company policy and its implementation with respect to both the workplace and our products.

CERTIFIED SKILLS AND VALUES

EMEC's values and reliability are the result of a long-standing commitment to quality and detail. We testify to that commitment through ongoing human resources training, rigorous abidance by production benchmarks, and concerted efforts to curb all employee health hazards. Our pledge is a firm one and is backed by our policy implementation and investment goals. Our global quality approach matches our market standing and is certified by the world's leading certification institutes.



PRIUS

ALL THE POWER YOU NEED

From the beginning, we decided to meet any dosing needs, even the most extreme. Exactly from this idea originates the series of motor driven pumps PRIUS, entirely designed and developed by EMEC to comply with any need of a higher dosage, with a range of 12 models.

POWER AND ACCURACY

The series of motors available for the PRIUS allows a wide range of flow rates, from a few liters up to over 1000 liters per hour, and a working pressure which can reach up to 100 bar, while maintaining at the same time, thanks to the quality of design and construction gained by EMEC in 34 years of research and development, the steady and absolute accuracy in dosage distinguishing of all our products.

RESISTANCE AND SAFETY

To succeed in combining power and accuracy in every situation of use is also possible thanks to a high degree of resistance and versatility. The possibility to choose between models with PTFE diaphragm and models with ceramic or SS plunger, together with liquid ends available in different materials and sizes to choose, makes motor driven pumps PRIUS able to meet any need of use and to result safe and resistant according to the nature of the substance to dose: from very viscous liquids to particularly aggressive chemical agents, from acidic solutions to basic, up to solvents and polymers.

CONTROL AND MANAGEMENT

Mechanical regulation of desired flow rate of PRIUS pumps is possible thanks to the specific knob. However, for higher management needs, EMEC also created the revolutionary series of multifunction motor driven pumps PRIUS MF. A completely new level of accuracy

in dosing control and regulation is ensured by the encoder electronic control, already used successfully in all our control instruments, the LCD display, permitting an easy and precise reading of all the data, and above all by the possibility to set up PRIUS MF with 7 different working modes. The maximum level of control is also ensured by the integration with our exclusive remote management system ERMES, that allows monitoring of the PRIUS MF pumps from everywhere and in every moment. Furthermore, through the Modbus (RS485) electronic module you can combine MF pumps with other instruments and manage everything through PLC (Programmable Logic Controller).

RELIABILITY AND EFFICIENCY

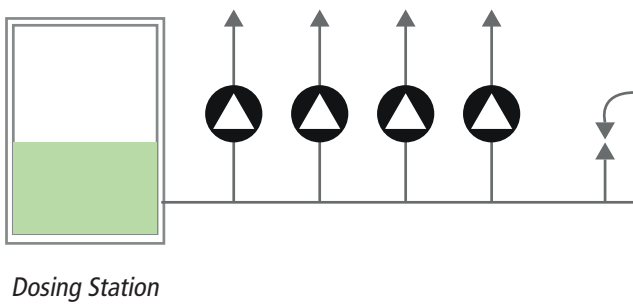
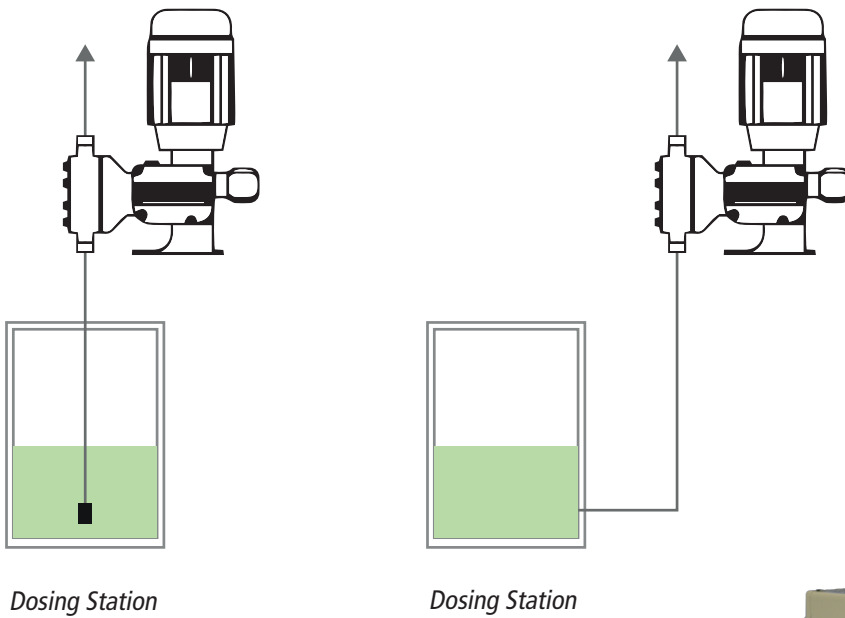
The great resistance and strength of PRIUS motor driven pumps ensure a high degree of efficiency and reliability, constant over time, with minimal servicing needs and a particularly long operating life. Lastly, PRIUS MF can comply with any situation by rotating the pump body by 90° over the electronic unit. The top qualities of power and accuracy in dosing, combined with the great reliability and the great versatility of the available models, make the motor driven pumps of PRIUS series suitable for a wide range of applications: from potable water facilities to treatment of water resulting from industrial activities, in purification systems and in food industry as well as in chemical industry. Wherever a top-level dosing system is required, PRIUS is the best answer.



DISCOVER PRIUS
ON EMECPUMPS.COM

INSTALLATION OF THE METERING PUMP

INSTALLATION EXAMPLES



PRIUS

MODELS

DIAPHRAGM

- 11** PRIUS D MF - 50/60 HZ 1-PHASE
MultiFunction electronic control
- 13** PRIUS D MF AP - HIGH PRESSURE 50 HZ 1-PHASE
MultiFunction electronic control
- 17** PRIUS D - 50 Hz 3-PHASE
- 19** PRIUS D - 60 HZ 3-PHASE
- 21** PRIUS D - 50 Hz 1-PHASE
- 23** PRIUS D - 60 HZ 1-PHASE
- 25** PRIUS D AP - HIGH PRESSURE 50 Hz 3-PHASE
- 27** PRIUS D AP - HIGH PRESSURE 60 Hz 3-PHASE
- 29** PRIUS D AP - HIGH PRESSURE 50 Hz 1-PHASE
- 31** PRIUS D AP - HIGH PRESSURE 60 Hz 1-PHASE
- 41** PRIUS D ATEX 2D/2G - 50 Hz 3-PHASE
- 43** PRIUS D ATEX 2D/2G - 60 Hz 3-PHASE
- 45** PRIUS D ATEX 3D/3G - 50 Hz 3-PHASE
- 47** PRIUS D ATEX 3D/3G - 60 Hz 3-PHASE
- 49** PRIUS D AP ATEX 2D/2G - HIGH PRESSURE 50/60 Hz 3-PHASE

PRIUS

MODELS

PLUNGER

- 15** PRIUS P MF - 50 HZ 1-PHASE
MultiFunction electronic control
- 33** PRIUS P - 50 HZ 3-PHASE
- 35** PRIUS P - 60 HZ 3-PHASE
- 37** PRIUS P - 50 HZ 1-PHASE
- 39** PRIUS P - 60 HZ 1-PHASE
- 51** PRIUS P ATEX 2D/2G - 50/60 Hz 3-PHASE
- 53** PRIUS P ATEX 3D/3G - 50/60 Hz 3-PHASE

FEATURES

- Multifunction motor pump with inverter
- Working mode: Constant, ppm, %, mlq, pause-work, weekly, mA, Volt and Batch
- Level control
- Alarms
- Stand-by
- Double position of the electronic unit (default or alternative gear box position)
- PTFE diaphragm
- Aluminium enclosure
- Spring return mechanism
- Manual degassing valve (PVDF and PP pump heads)
- Stroke adjustment
- Liquid ends available in different sizes and materials
- Double ball check valve

PUMP HEADS



PVDF



PP



AISI 316L

pump head mod.	stroke LENGTH	50/60Hz	SPM	Pressure		Capacity		Motor	HOSES CONNECTION		
				bar	psi	l/h	gph		PVDF	SS	PP
NM	3 mm	010060	175	10	145	60	15,8	0,37 kW	1/2" 13 mm	R1/2" G1/2"	1/2" 13 mm
		010030	94			30	7,9				
		010024	70			24	6,3				
		010012	35			12	3,2				
	4 mm	010016	35	10	145	16	4,2	0,37 kW	1/2" 13 mm	R1/2" G1/2"	1/2" 13 mm
TM	3 mm	010105	175	10	145	105	27,7	0,37 kW	3/4" 13 mm	R3/4" G3/4"	3/4" 13 mm
		010056	94			56	14,8				
		010042	70			42	11,1				
		010021	35			21	5,5				
	4 mm	007160	175	7	101,5	160	42,3	0,37 kW	3/4" 13 mm	R3/4" G3/4"	3/4" 13 mm
		007086	94			86	22,7				
		007064	70			64	16,9				
		007032	35			32	8,5				
	6 mm	005240	175	5	72,5	240	63,4	0,37 kW	3/4" 18 mm	R3/4" G3/4"	3/4" 18 mm
		005128	94			128	33,8				
		005096	70			96	25,4				
		005048	35			48	12,7				
UM	4 mm	005350	175	5	72,5	350	92,4	0,37 kW	G1-1/2" 30 mm	R1"	G1-1/2" 30 mm
		005188	94			188	49,7				
		005140	70			140	37				
		005070	35			70	18,5				
	5 mm	005440	175	5	72,5	440	116,2	0,37 kW	G1-1/2" 30 mm	R1"	G1-1/2" 30 mm
		005236	94			236	62,3				
		005176	70			176	46,5				
		005176	35			88	23,2				
	6 mm	005530	175	5	72,5	530	140	0,37 kW	G1-1/2" 30 mm	R1"	G1-1/2" 30 mm
		005284	94			284	75				
		005212	70			212	56				
		005106	35			106	28				
10 mm	002M00	175	2	29	1000	264,2	0,37 kW	G1-1/2" 30 mm (i.d.)	R1"	G1-1/2" 30 mm	
	004520	94	4	58	520	137,4					
	005390	70	5	72,5	390	103					
	005180	35			180	47,6					
8 mm	003750	175	3	43,5	750	198	0,37 kW	G1-1/2" 30 mm (i.d.)	R1"	G1-1/2" 30 mm	
	005380	94	5	72,5	380	100					
	005290	70			290	76,6					
	005140	35			140	37					

PRIUS D MF 50/60 Hz 1-PHASE

Multifunction electronic control

MOTOR

0,37 kW: 3-phase 230 V 1370 rpm

PRIUS D MF 50/60 Hz with SINGLE-PHASE supply has: 10 working modes (constant, ppm, %, mlq, pause-work, weekly, pulse, mA, Volt and Batch), level control, alarms, stand-by, double position of the electronic unit (standard or alternative gear box mounting), PTFE diaphragm, aluminium enclosure, spring return mechanism, manual degassing valve (PVDF and PP pump heads), flow regulation, double ball check valve and liquid ends available in different sizes and materials. PVDF, Stainless Steel or PP pump heads available.

Multifunction motor pump PRIUS D MF 50/60 Hz SINGLE-PHASE brings, moreover, a unique level of management thanks to LCD display and encoder electronic controller that ensure the highest accuracy in dosage setting.

OPTIONS: MODBUS, IP65 Motor.

ALTERNATIVE GEAR BOX POSITION

DEFAULT GEAR BOX POSITION



FEATURES

- Multifunction motor driven high pressure pump with inverter
- Working mode: Constant, ppm, %, mlq, pause-work, weekly, mA, Volt and Batch
- Level control
- Alarms
- Stand-by
- Double position of the electronic unit (default or alternative gear box position)
- PTFE diaphragm
- Aluminium enclosure
- Spring return mechanism
- Stroke adjustment
- Double ball check valve

pump head mod.	stroke LENGTH	50Hz	SPM	Pressure		Capacity		Motor	HOSES CONNECTION
				bar	psi	l/h	gph		SS
L1	1.5 mm	100004	175	100	1450,4	4	1,1	0,37 kW	R3/8"
		100002	94			2	0,5		
		1001,5	70			1,5	0,4		
M1	2 mm	050017	175	50	870,2	17	4,5	0,37 kW	R1/2"
		050009	94			9	2,4		
		050005	70			5	1,3		
		05002,5	35			2,5	0,7		
N	2 mm	030028	175	30	435,1	28	7,4	0,37 kW	R1/2"
		030015	94			15	4		
		030010	70			10	2,6		
		030005	35			5	1,3		
S	4 mm	030076	175	30	435,1	76	20,1	0,37 kW	R1/2"
		030041	94			41	10,8		
		030030	70			30	7,9		
		030015	35			15	4		
T	6 mm	020170	175	20	290,1	170	44,9	0,37 kW	R3/4"
		020091	94			91	24		
		020068	70			68	18		
		020034	35			34	9		

PUMP HEADS



AISI 316L

PRIUS D MF AP HIGH PRESSURE 50 Hz 1-PHASE

Multifunction electronic control

MOTOR

0,37 kW: 3-phase 230 V 1370 rpm

PRIUS D MF for HIGH PRESSURE with SINGLE-PHASE supply has: 10 working modes (constant, ppm, %, mlq, pause-work, weekly, pulse, mA, Volt and Batch), level control, alarms, stand-by, double position of the electronic unit (standard or rotated mounting), PTFE diaphragm, **SS pump head**, aluminium enclosure, spring return mechanism, flow regulation and double ball check valve.

Multifunction motor pump PRIUS D MF HIGH PRESSURE SINGLE-PHASE brings, moreover, a unique level of management thanks to LCD display and encoder electronic controller that ensure the highest accuracy in dosage setting.

OPTIONS: MODBUS.

ALTERNATIVE GEAR BOX POSITION



DEFAULT GEAR BOX POSITION



WITH PP PUMP HEAD AND CERAMIC PLUNGER
 WITH SS PUMP HEAD AND PLUNGER

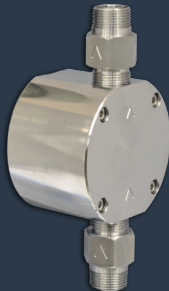
FEATURES

- Multifunction plunger pump with inverter
- Working mode: Constant, ppm, %, mlq, pause-work, weekly, mA, Volt and Batch
- Level control
- Alarms
- Stand-by
- Double position of the electronic unit (default or alternative gear box position)
- Ceramic plunger / Stainless steel (AISI316) plunger
- Aluminium enclosure
- Stroke adjustment
- Double ball check valve

PUMP HEADS



PP

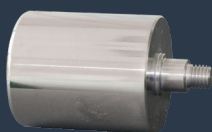


AISI 316L

PLUNGERS



CERAMIC
(SIALOX96)



AISI 420

LENGTH	PLUNGER	50Hz	SPM	Pressure		Capacity		Motor	HOSES CONNECTION	
				bar	psi	l/h	gph		PP	SS
14	010024	175	10	145	24	6,3	0,37 kW	G1/2" 12x18	R1/2"	
	010013	94			13	3,4				
	010010	70			10	2,6				
	010005	35			5	1,3				
25	010080	175	10	145	80	21,1	0,37 kW	G1/2" 12x18	R1/2"	
	010043	94			43	11,4				
	010032	70			32	8,5				
	010016	35			16	4,2				
32	010130	175	10	145	130	34,3	0,37 kW	G1/2" 12x18	R1/2"	
	010070	94			70	18,5				
	010052	70			52	13,7				
	010026	35			26	6,9				
40	010210	175	10	145	210	55,5	0,37 kW	G3/4" i.d. 18 mm	R3/4"	
	010113	94			113	29,8				
	010084	70			84	22,2				
	010042	35			42	11,1				
50	010320	175	10	145	320	84,5	0,37 kW	G3/4" i.d. 18 mm	R3/4"	
	010172	94			172	45,4				
	010128	70			128	33,8				
	010064	35			64	16,9				

PRIUS P MF 50 Hz 1-PHASE

Multifunction electronic control

MOTORS

0,18 kW: 3-phase 230 V 1350 rpm

0,37 kW: 3-phase 230 V 1370 rpm

PRIUS P MF with SINGLE-PHASE supply has: 10 working modes (constant, ppm, %, mlq, pause-work, weekly, pulse, mA, Volt and Batch), level control, alarms, stand-by, double position of the electronic unit (standard or rotated mounting), **ceramic or SS plunger**, aluminium enclosure, flow regulation and double ball check valve.

Multifunction motor pump PRIUS P MF SINGLE-PHASE brings, moreover, a unique level of management thanks to LCD display and encoder electronic controller that ensure the highest accuracy in dosage setting.

OPTIONS: MODBUS, IP65 Motor.

SS PUMP HEAD AND PLUNGER



PP PUMP HEAD AND CERAMIC PLUNGER



FEATURES

- 3-phase motor
- PTFE diaphragm
- Aluminium enclosure
- Spring return mechanism
- Manual degassing valve (PVDF and PP pump heads)
- Double ball check valve
- Stroke adjustment
- Liquid ends available in different sizes and materials

PUMP HEADS



PVDF



PP



AISI 316L

pump head mod.	stroke LENGTH	50Hz	SPM	Pressure		Capacity		Motor	HOSES CONNECTION		
				bar	psi	l/h	gph		PVDF	SS	PP
NM	3 mm	010060	175	10	145	60	15,8	0,18 kW	1/2" 13 mm	R1/2" G1/2"	1/2" 13 mm
		010030	94			30	7,9				
		010024	70			24	6,3				
		010012	35			12	3,2				
	4 mm	010016	35	10	145	16	4,2	0,18 kW	1/2" 13 mm	R1/2" G1/2"	1/2" 13 mm
TM	3 mm	010105	175	10	145	105	27,7	0,37 kW	3/4" 13 mm	R3/4" G3/4"	3/4" 13 mm
		010056	94			56	14,8				
		010042	70			42	11,1				
		010021	35			21	5,5				
	4 mm	007160	175	7	101,5	160	42,3	0,37 kW	3/4" 13 mm	R3/4" G3/4"	3/4" 13 mm
		007086	94			86	22,7				
		007064	70			64	16,9				
		007032	35			32	8,5				
	6 mm	005240	175	5	72,5	240	63,4	0,37 kW	3/4" 18 mm	R3/4" G3/4"	3/4" 18 mm
		005128	94			128	33,8				
		005096	70			96	25,4				
		005048	35			48	12,7				
UM	4 mm	005350	175	5	72,5	350	92,4	0,37 kW	G1-1/2" 30 mm	R1"	G1-1/2" 30 mm
		005188	94			188	49,7				
		005140	70			140	37				
		005070	35			70	18,5				
	5 mm	005440	175	5	72,5	440	116,2	0,37 kW	G1-1/2" 30 mm	R1"	G1-1/2" 30 mm
		005236	94			236	62,3				
		005176	70			176	46,5				
		005176	35			88	23,2				
	6 mm	005530	175	5	72,5	530	140	0,37 kW	G1-1/2" 30 mm	R1"	G1-1/2" 30 mm
		005284	94			284	75				
		005212	70			212	56				
		005106	35			106	28				
	10 mm	005M00	175	5	72,5	1000	264,1	0,55 kW	G1-1/2" 30 mm	R1"	G1-1/2" 30 mm
		005520	94			520	137	0,37 kW			
	8 mm	005750	175	5	72,5	750	198,1	0,55 kW	G1-1/2" 30 mm	R1"	G1-1/2" 30 mm
	10 mm	002M00	175	2	29	1000	264,1	0,37 kW	G1-1/2" 30 mm	R1"	G1-1/2" 30 mm
004520		94	4	58	520	137,4					
005390		70	5	72,5	390	103					
005180		35			180	47,6					
8 mm	003750	175	3	43,5	750	198,1	0,37 kW	G1-1/2" 30 mm	R1"	G1-1/2" 30 mm	
	005380	94	5	72,5	380	100,4					
	005290	70			290	76,6					
	005140	35			140	37					

PRIUS D

50 Hz 3-PHASE

MOTORS

0,18 kW: 3-phase 230 V 1350 rpm

0,37 kW: 3-phase 230 V 1370 rpm

0,55 kW: 3-phase 230 V 1395 rpm

PRIUS D 50 Hz with 3-PHASE motor has: PTFE diaphragm, aluminium enclosure, spring return mechanism, manual degassing valve (PVDF and PP pump heads), flow regulation, double ball check valve and liquid ends available in different sizes and materials. PVDF, Stainless Steel or PP pump heads available.



FEATURES

- 3-phase motor
- PTFE diaphragm
- Aluminium enclosure
- Spring return mechanism
- Manual degassing valve (PVDF and PP pump heads)
- Double ball check valve
- Stroke adjustment
- Liquid ends available in different sizes and materials

PUMP HEADS



PVDF



PP



AISI 316L

pump head mod.	stroke LENGTH	60Hz	SPM	Pressure		Capacity		Motor	HOSES CONNECTION		
				bar	psi	l/h	gph		PVDF	SS	PP
NM	3 mm	010055	175	10	145	55	14,5	0,18 kW	1/2" 13 mm	R1/2" G1/2"	1/2" 13 mm
		010027	87			27	7,1				
		010014	44			14	3,7				
TM	3 mm	010100	175	10	145	100	26,4	0,37 kW	3/4" 13 mm	R3/4" G3/4"	3/4" 13 mm
		010050	87			50	13,2				
		010025	44			25	6,6				
	4 mm	007150	175	7	101,5	150	39,6	0,37 kW	3/4" 13 mm	R3/4" G3/4"	3/4" 13 mm
		007075	87			75	19,8				
		007037	44			37	9,8				
6 mm	005230	175	5	72,5	230	60,7	0,37 kW	3/4" 18 mm	R3/4" G3/4"	3/4" 18 mm	
	005115	87			115	30,4					
	005057	44			57	15,1					
UM	4 mm	005335	175	5	72,5	335	88,5	0,37 kW	G1-1/2" 30 mm	R1"	G1-1/2" 30 mm
		005165	87			165	43,6				
		005084	44			84	22,2				
	5 mm	005420	175	5	72,5	420	110,9	0,37 kW	G1-1/2" 30 mm	R1"	G1-1/2" 30 mm
		005210	87			210	55,5				
		005105	44			105	27,7				
	6 mm	005505	175	5	72,5	505	133,4	0,37 kW	G1-1/2" 30 mm	R1"	G1-1/2" 30 mm
		005250	87			250	66				
		005126	44			126	33,3				
	10 mm	005950	175	5	72,5	950	251	0,55 kW	G1-1/2" 30 mm	R1"	G1-1/2" 30 mm
	10 mm	002950	175	2	29	950	251	0,37 kW	G1-1/2" 30 mm	R1"	G1-1/2" 30 mm
		002472	87			472	124,7				
002238		44	238			62,9					
6 mm	003720	175	3	43,5	720	190,2	0,37 kW	G1-1/2" 30 mm	R1"	G1-1/2" 30 mm	
	003357	87			357	94,3					
	003181	44			181	47,8					

PRIUS D

60 Hz 3-PHASE

MOTOR

0,37 kW: 3-phase 220/380 V 1670 rpm

0,18 kW: 3-phase 220/380 V 1650 rpm

PRIUS D 60 Hz with 3-PHASE motor has: PTFE diaphragm, aluminium enclosure, spring return mechanism, manual degassing valve (PVDF and PP pump heads), flow regulation, double ball check valve and liquid ends available in different sizes and materials. PVDF, Stainless Steel or PP pump heads available.



FEATURES

- Single-phase motor
- PTFE diaphragm
- Aluminium enclosure
- Spring return mechanism
- Manual degassing valve (PVDF and PP pump heads)
- Double ball check valve
- Stroke adjustment
- Liquid ends available in different sizes and materials

PUMP HEADS



PVDF



PP



AISI 316L

pump head mod.	stroke LENGTH	50Hz	SPM	Pressure		Capacity		Motor	HOSES CONNECTION		
				bar	psi	l/h	gph		PVDF	SS	PP
NM	3 mm	010060	175	10	145	60	15,8	0,37 kW	1/2" 13 mm	R1/2" G1/2"	1/2" 13 mm
		010030	94			30	7,9				
		010024	70			24	6,3				
		010012	35			12	3,2				
	3 mm	010105	175	10	145	105	27,7	0,37 kW	3/4" 13 mm	R3/4" G3/4"	3/4" 13 mm
		010056	94			56	14,8				
		010042	70			42	11,1				
		010021	35			21	5,5				
TM	4 mm	007160	175	7	101,5	160	42,3	0,37 kW	3/4" 13 mm	R3/4" G3/4"	3/4" 13 mm
		007086	94			86	22,7				
		007064	70			64	16,9				
		007032	35			32	8,5				
	6 mm	005240	175	5	72,5	240	63,4	0,37 kW	3/4" 18 mm	R3/4" G3/4"	3/4" 18 mm
		005128	94			128	33,8				
		005096	70			96	25,4				
		005048	35			48	12,7				
	4 mm	005350	175	5	72,5	350	92,4	0,37 kW	G1-1/2" 30 mm	R1"	G1-1/2" 30 mm
		005188	94			188	49,7				
		005140	70			140	37				
		005070	35			70	18,5				
UM	5 mm	005440	175	5	72,5	440	116,2	0,37 kW	G1-1/2" 30 mm	R1"	G1-1/2" 30 mm
		005236	94			236	62,3				
		005176	70			176	46,5				
		005088	35			88	23,2				
	6 mm	005530	175	5	72,5	530	140	0,37 kW	G1-1/2" 30 mm	R1"	G1-1/2" 30 mm
		005284	94			284	75				
		005212	70			212	56				
		005106	35			106	28				

PRIUS D

50 Hz 1-PHASE

MOTORS

0,37 kW: 1-phase 230 V 1350 rpm

0,55 kW: 1-phase 230 V 1370 rpm

PRIUS D 50 Hz with SINGLE-PHASE motor has: PTFE diaphragm, aluminium enclosure, spring return mechanism, manual degassing valve (PVDF and PP pump heads), flow regulation, double ball check valve and liquid ends available in different sizes and materials. PVDF, Stainless Steel or PP pump heads available.



FEATURES

- Single-phase motor
- PTFE diaphragm
- Aluminium enclosure
- Spring return mechanism
- Manual degassing valve (PVDF and PP pump heads)
- Double ball check valve
- Stroke adjustment
- Liquid ends available in different sizes and materials

pump head mod.	stroke length	60Hz	SPM	Pressure		Capacity		Motor	HOSES CONNECTION		
				bar	psi	l/h	gph		PVDF	SS	PP
NM	3 mm	010055	175	10	145	55	14,5	0,37 kW	1/2" 13 mm	R1/2" G1/2"	1/2" 13 mm
		010027	87			27	7,1				
		010014	44			14	3,6				
TM	3 mm	010100	175	10	145	100	26,4	0,37 kW	3/4" 13 mm	R3/4" G3/4"	3/4" 13 mm
		010050	87			50	13,2				
		010025	44			25	6,6				
	4 mm	007150	175	7	101,5	150	39,6	0,37 kW	3/4" 13 mm	R3/4" G3/4"	3/4" 13 mm
		007075	87			75	19,8				
		007037	44			37	9,7				
6 mm	005230	175	5	72,5	230	60,7	0,37 kW	3/4" 18 mm	R3/4" G3/4"	3/4" 18 mm	
	005115	87			115	30,3					
	005057	44			57	15					
UM	4 mm	005335	175	5	72,5	335	88,4	0,55 kW	G1-1/2" 30 mm	R1"	G1-1/2" 30 mm
		005165	87			165	43,5				
		005084	44			84	22,1				
	5 mm	005420	175	5	72,5	420	110,9	0,55 kW	G1-1/2" 30 mm	R1"	G1-1/2" 30 mm
		005210	87			210	55,4				
		005105	44			105	27,7				
	6 mm	005505	175	5	72,5	505	133,4	0,55 kW	G1-1/2" 30 mm	R1"	G1-1/2" 30 mm
		005250	87			250	66				
		005126	44			126	33,2				

PUMP HEADS



PVDF



PP



AISI 316L

PRIUS D

60 Hz 1-PHASE

MOTORS

0,37 kW: 1-phase 220/380 V 1700 rpm

0,37 kW: 1-phase 115 V 1680 rpm

0,55 kW: 1-phase 230 V 1700 rpm

PRIUS D 60 Hz with SINGLE-PHASE motor has: PTFE diaphragm, aluminium enclosure, spring return mechanism, manual degassing valve (PVDF and PP pump heads), flow regulation, double ball check valve and liquid ends available in different sizes and materials. PVDF, Stainless Steel or PP pump heads available.



FEATURES

- 3-phase motor driven high pressure pump
- PTFE diaphragm
- Aluminium enclosure
- Spring return mechanism
- Stroke adjustment
- Double ball check valve

pump head mod.	stroke LENGTH	50Hz	SPM	Pressure		Capacity		Motor	HOSES CONNECTION
				bar	psi	l/h	gph		SS
L1	1,5 mm	100004	175	100	1450,4	4	1,1	0,37 kW	3/8"
		100002	94			2	0,5		
		1001,5	70			1,5	0,4		
M1	2 mm	050017	175	50	870,2	17	4,5	0,37 kW	1/2"
		050009	94			9	2,4		
		050005	70			5	1,3		
		05002,5	35			2,5	0,7		
N	2 mm	030028	175	30	435,1	28	7,4	0,37 kW	1/2"
		030014	94			14	3,7		
		030010	70			10	2,6		
		030005	35			5	1,3		
S	4 mm	030076	175	30	435,1	76	20,1	0,37 kW	1/2"
		030041	94			41	10,8		
		030030	70			30	7,9		
		030015	35			15	4		
T	6 mm	020170	175	20	290,1	170	44,9	0,37 kW	3/4"
		020091	94			91	24		
		020068	70			68	18		
		020034	35			34	9		

PUMP HEADS



AISI 316L

PRIUS D AP HIGH PRESSURE 50 Hz 3-PHASE

MOTOR

0,37 kW: 3-phase 230 V 1370 rpm

PRIUS D 50 Hz for HIGH PRESSURE with 3-PHASE motor has: PTFE diaphragm, SS pump head, aluminium enclosure, spring return mechanism, flow regulation and double ball check valve.



FEATURES

- 3-phase motor driven high pressure pump
- PTFE diaphragm
- Aluminium enclosure
- Spring return mechanism
- Stroke adjustment
- Double ball check valve

pump head mod.	stroke LENGTH	60Hz	SPM	Pressure		Capacity		Motor	HOSES CONNECTION
				bar	psi	l/h	gph		SS
L1	1.5 mm	100003	175	100	1450,4	3	0,8	0,37 kW	R3/8"
		1001,5	87			1,5	0,4		
M1	2 mm	050014	175	50	725,2	14	3,7	0,37 kW	R1/2"
		050007	87			7	1,8		
		0503,5	44			3,5	0,9		
N	2 mm	030026	175	30	435,1	26	6,9	0,37 kW	R1/2"
		030013	87			13	3,4		
		030006	44			6	1,6		
S	4 mm	030072	175	30	435,1	72	19	0,37 kW	R1/2"
		030036	87			36	9,5		
		030018	44			18	4,8		
T	6 mm	020153	175	20	290,1	153	40,4	0,37 kW	R3/4"
		020076	87			76	20,1		
		020038	44			38	10		

PUMP HEADS



AISI 316L

PRIUS D AP HIGH PRESSURE 60 Hz 3-PHASE

MOTOR

0,37 kW: 3-phase 460 V 1670 rpm

PRIUS D 60 Hz for HIGH PRESSURE with 3-PHASE motor has: PTFE diaphragm, SS pump head, aluminium enclosure, spring return mechanism, flow regulation and double ball check valve.



FEATURES

- PTFE diaphragm
- Aluminium enclosure
- Spring return mechanism
- Double ball check valve
- 1-phase motor

stroke length	50Hz	SPM	Pressure		Capacity		Motor	HOSES CONNECTION
			bar	psi	l/h	gph		AISI 316L
1.5 mm	100004	175	100	1450,3	4	1	0,37 kW	R3/8"
	100002	94			2	0,5		
	1001,5	70			1,5	0,3		
2 mm	050017	175	50	725,1	17	4,4	0,37 kW	R1/2"
	050009	94			9	2,3		
	050005	70			5	1,3		
	05002,5	35			2,5	0,6		
2 mm	030028	175	30	435,1	28	7,3	0,37 kW	R1/2"
	030014	94			14	3,6		
	030010	70			10	2,6		
	030005	35			5	1,3		
4 mm	030076	175	30	435,1	76	20	0,37 kW	R1/2"
	030041	94			41	10,8		
	030030	70			30	7,9		
	030015	35			15	3,9		
6 mm	020170	175	20	290	170	44,9	0,55 kW	R3/4"
	020091	94			91	24	0,37 kW	
	020068	70			68	17,9		
	020034	35			34	8,9		

PUMP HEADS



AISI 316L

PRIUS D AP HIGH PRESSURE 50 Hz 1-PHASE

MOTOR

0,37 kW: 1-phase 230 V 1350 rpm

0,55 kW: 1-phase 230 V 1370 rpm

PRIUS D 50 Hz for HIGH PRESSURE with SINGLE-PHASE motor has: PTFE diaphragm, SS pump head, aluminium enclosure, spring return mechanism, flow regulation and double ball check valve.



FEATURES

- PTFE diaphragm
- Aluminium enclosure
- Spring return mechanism
- Double ball check valve
- 1-phase motor

pump head mod.	stroke length	60Hz	SPM	Pressure		Capacity		Motor	HOSES CONNECTION
				bar	psi	l/h	gph		AISI 316L
LM AP	1.5 mm	100003	175	100	1450,3	3	0,7	0,37 kW	R3/8"
		1001,5	87			1,5	0,3		
MM AP	2 mm	050014	175	50	725,1	14	3,6	0,37 kW	R1/2"
		050007	87			7	1,8		
		0503,5	44			3,5	0,9		
NM AP	2 mm	030026	175	30	435,1	26	6,8	0,37 kW	R1/2"
		030013	87			13	3,4		
		030006	44			6	1,5		
SM AP	4 mm	030072	175	30	435,1	72	19	0,37 kW	R1/2"
		030036	87			36	9,5		
		030018	44			18	4,7		
TM AP	6 mm	020153	175	20	290	153	40,4	0,55 kW	R3/4"
		020076	87			76	20	0,37 kW	
		020038	44			38	10		

PUMP HEADS



AISI 316L

PRIUS D AP HIGH PRESSURE 60 Hz 1-PHASE

MOTOR

0,37 kW: 1-phase 230 V 1700 rpm

0,55 kW: 1-phase 230 V 1700 rpm

0,37 kW: 1-phase 115 V 1680 rpm

PRIUS D 60 Hz for HIGH PRESSURE with SINGLE-PHASE motor has: PTFE diaphragm, SS pump head, aluminium enclosure, spring return mechanism, flow regulation and double ball check valve.

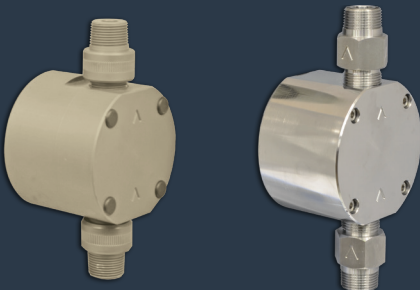


WITH PP PUMP HEAD AND CERAMIC PLUNGER
WITH SS PUMP HEAD AND PLUNGER

FEATURES

- 3-phase motor
- Ceramic plunger / Stainless steel (AISI316) plunger
- Aluminium enclosure
- Stroke adjustment

PUMP HEADS



PP

AISI 316L

PLUNGERS



CERAMIC
(SIALOX96)

AISI 420

LENGTH PLUNGER	50Hz	SPM	Pressure		Capacity		Motor	HOSES CONNECTION		
			bar	psi	l/h	gph		PP	SS	
15 mm	14	010024	175	10	145	24	6,3	0,18 kW	G1/2" 12x18	R1/2"
		010013	94			13	3,4			
		010010	70			10	2,6			
		010005	35			5	1,3			
	25	010080	175	10	145	80	21,1	0,18 kW	G1/2" 12x18	R1/2"
		010043	94			43	11,4			
		010032	70			32	8,5			
		010016	35			16	4,2			
	32	010130	175	10	145	130	34,3	0,18 kW	G1/2" 12x18	R1/2"
		010070	94			70	18,5			
		010052	70			52	13,7			
		010026	35			26	6,9			
40	010210	175	10	145	210	55,5	0,37 kW	G3/4" i.d. 18 mm	R3/4"	
	010113	94			113	29,8				
	010084	70			84	22,2				
	010042	35			42	11,1				
50	010320	175	10	145	320	84,5	0,37 kW	G3/4" i.d. 18 mm	R3/4"	
	010172	94			172	45,4				
	010128	70			128	33,8				
	010064	35			64	16,9				
63	007508	175	7	101,5	508	35	0,55 kW	/	R1"	
	007273	94			273	35				
	007203	70			203	35				
	007101	35			101	26,7				

PRIUS P 50 Hz 3-PHASE

MOTORS

0,18 kW: 3-phase 230/400 V

0,37 kW: 3-phase 230/400 V

PRIUS P 50 Hz with 3-PHASE motor has: ceramic or SS plunger, aluminium enclosure, flow regulation and double ball check valve.

SS PUMP HEAD AND PLUNGER



PP PUMP HEAD AND CERAMIC PLUNGER

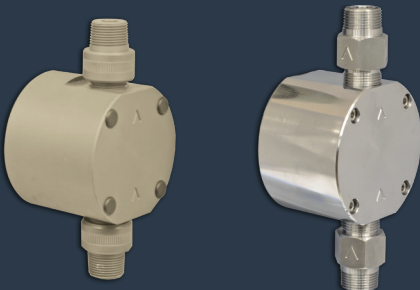


WITH PP PUMP HEAD AND CERAMIC PLUNGER
 WITH SS PUMP HEAD AND PLUNGER

FEATURES

- 3-phase motor
- Ceramic or stainless steel (AISI420) plunger
- Aluminium enclosure
- Stroke adjustment

PUMP HEADS



PP

AISI 316L

PLUNGERS



CERAMIC
(SIALOX96)

AISI 420

LENGTH	PLUNGER	60Hz	SPM	Pressure		Capacity		Motor	HOSES CONNECTION	
				bar	psi	l/h	gph		PP	SS
15 mm	14	010023	175	10	145	23	6,3	0,18 kW	G1/2" 12x18	R1/2"
		010011	87			11	3,2			
		010005	44			5	1,3			
	25	010076	175	10	145	76	21,1	0,18 kW	G1/2" 12x18	R1/2"
		010038	87			38	10,6			
		010019	44			19	5			
	32	010126	175	10	145	126	34,3	0,18 kW	G1/2" 12x18	R1/2"
		010063	87			63	17,2			
		010031	44			31	8,2			
	40	010195	175	10	145	195	55,5	0,37 kW	G3/4" i. d. 18 mm	R3/4"
		010097	87			97	27,7			
		010048	44			48	12,7			
50	010300	175	10	145	300	84,5	0,37 kW	G3/4" i. d. 18 mm	R3/4"	
	010150	87			150	42,3				
	010075	44			75	19,8				
63	007469	175	7	101,5	469	123,9	0,55 kW	/	R1"	
	007234	87			234	61,8	0,37 kW			
	007117	44			117	30,9				

PRIUS P 60 Hz 3-PHASE

MOTORS

0,18 kW: 3-PHASE MOTOR 460 V

0,37 kW: 3-PHASE MOTOR 460 V

PRIUS P 60 Hz with 3-PHASE motor has: ceramic or SS plunger, aluminium enclosure, flow regulation and double ball check valve.

SS PUMP HEAD AND PLUNGER



PP PUMP HEAD AND CERAMIC PLUNGER



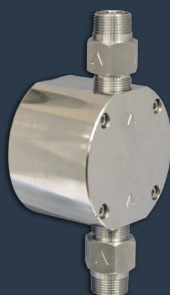
FEATURES

- Ceramic or stainless steel (AISI420) plunger
- Aluminium enclosure
- Spring return mechanism
- Double ball check valve
- 1-phase motor

PUMP HEADS

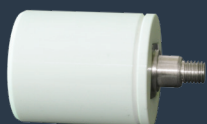


PP

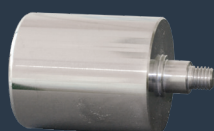


AISI 316L

PLUNGERS



CERAMIC
(SIALOX96)



AISI 420

Plunger stroke length	50Hz	SPM	Pressure		Capacity		Motor	HOSES CONNECTION	
			bar	psi	l/h	gph		PP	SS
14 mm	010024	175	10	145	24	6,3	0,37 kW	G1/2" 12x18	R1/2"
	010013	94			13	3,4			
	010010	70			10	2,6			
	010005	35			5	1,3			
25 mm	010080	175	10	145	80	21,1	0,37 kW	G1/2" 12x18	R1/2"
	010043	94			43	11,3			
	010032	70			32	8,4			
	010016	35			16	4,2			
32 mm	010130	175	10	145	130	34,3	0,37 kW	G1/2" 12x18	R1/2"
	010070	94			70	18,4			
	010052	70			52	13,7			
	010026	35			26	6,8			
40 mm	010210	175	10	145	210	55,4	0,55 kW	G3/4" d.i. 18 mm	R3/4"
	010113	94			113	29,8			
	010084	70			84	22,1			
	010042	35			42	11			
50 mm	010320	175	10	145	320	84,5	0,55 kW	G3/4" d.i. 18 mm	R3/4"
	010172	94			172	45,4			
	010128	70			128	33,8			
	010064	35			64	16,9			
63 mm	007508	175	7	101,5	508	134,1	0,55 kW	/	R1"
	007273	94			273	72,1			
	007203	70			203	53,6			
	007101	35			101	26,6			

PRIUS P 50 Hz 1-PHASE

MOTOR

0,37 kW: 1-phase 230/400 V 1350 rpm
0,55 kW: 1-phase 230/400 V 1370 rpm

PRIUS P 50 Hz with SINGLE-PHASE motor has: ceramic or SS plunger, aluminium enclosure, flow regulation and double ball check valve.

SS PUMP HEAD AND PLUNGER

PP PUMP HEAD AND CERAMIC PLUNGER



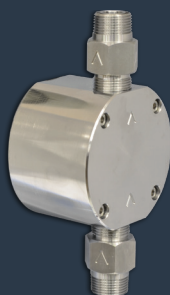
FEATURES

- Ceramic or stainless steel (AISI420) plunger
- Aluminium enclosure
- Spring return mechanism
- Double ball check valve
- 1-phase motor

PUMP HEADS



PP

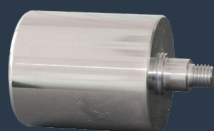


AISI 316

PLUNGERS



CERAMIC
(SIALOX96)



AISI 316

Plunger stroke length	60Hz	SPM	Pressure		Capacity		Motor	HOSES CONNECTION	
			bar	psi	l/h	gph		PP	SS
14 mm	010023	175	10	145	23	6	0,37 kW	G1/2" 12x18	R1/2"
	010011	87			11	2,9			
	010005	44			5	1,3			
25 mm	010076	175	10	145	76	20	0,37 kW	G1/2" 12x18	R1/2"
	010038	87			38	10			
	010019	44			19	5			
32 mm	010126	175	10	145	126	33,2	0,37 kW	G1/2" 12x18	R1/2"
	010063	87			63	16,6			
	010031	44			31	8,1			
40 mm	010195	175	10	145	195	51,5	0,37 kW	G3/4" d.i. 18 mm	R3/4"
	010097	87			97	25,6			
	010048	44			48	12,6			
50 mm	010300	175	10	145	300	79,2	0,37 kW	G3/4" d.i. 18 mm	R3/4"
	010150	87			150	39,6			
	010075	44			75	19,8			
63 mm	007469	175	7	101,5	469	123,8	0,55 kW	/	R1"
	007234	87			234	61,8			
	007117	44			117	30,9	0,37 kW		

PRIUS P 60 Hz 1-PHASE

MOTOR

0,37 kW: 1-phase 230/400 V 1700 rpm
 0,55 kW: 1-phase 230/400 V 1700 rpm
 0,37 kW: 1-phase 115 V 1680 rpm

PRIUS P 60 Hz with SINGLE-PHASE motor has: ceramic or SS plunger, aluminium enclosure, flow regulation and double ball check valve.

SS PUMP HEAD AND PLUNGER

PP PUMP HEAD AND CERAMIC PLUNGER



FEATURES

- 3-phase motor
- PTFE diaphragm
- Aluminium enclosure
- Spring return mechanism
- Double ball check valve
- Stroke adjustment
- Stainless steel liquid ends (AISI 316)

PUMP HEADS



AISI 316

pump head mod.	stroke length	50Hz	SPM	Pressure		Capacity		HOSES CONNECTION	2G	2D
				bar	psi	l/h	gph		Motor	Motor
NM	1,5 mm	010006	35	10	145	6	1,5	R1/2" G1/2"	0,18 kW	0,25 kW
	3 mm	010060	175	10	145	60	15,8			
		010030	94			30	7,9			
		010024	70			24	6,3			
		010012	35			12	3,1			
4 mm	010016	35	10	145	16	4,2				
TM	3 mm	010105	175	10	145	105	27,7	R3/4" G3/4"	0,37 kW	0,37 kW
		010056	94			56	14,7			
		010042	70			42	11			
		010021	35			21	5,5			
	4 mm	007160	175	7	101,5	160	42,2	R3/4" G3/4"	0,37 kW	0,37 kW
		007086	94			86	22,7			
		007064	70			64	16,9			
		007032	35			32	8,4			
6 mm	005240	175	5	72,5	240	63,4	R3/4" G3/4"	0,37 kW	0,37 kW	
	005128	94			128	33,8				
	005096	70			96	25,3				
	005048	35			48	12,6				

**Category 2**

Installation areas liable to be endangered by explosive atmospheres.

Pumps intended for use in areas in which explosive atmospheres are likely to occur.

	G (gas)	D (dust)
1999/92/EC	Zone 1	Zone 21

ATEX-approved pumps are for use in **potentially explosive atmospheres**.

Explosive atmospheres consists of air and combustible matter, such as gases, vapours, mists or dusts in which the explosion spreads after ignition.

We offer explosion-proof or dust-ignition-proof motors in accordance with the ATEX directive **2014/34/UE**.

ATEX-approved pumps can be used in areas (zones) classified according to the directive 1999/92/EC.

ATEX

II 2G c IIB T3, T4



II 2D IIIC T200°C, resp T135°C

MOTORS

0,18 kW: 3-PHASE MOTOR 220-240/380-420 V

0,25 kW: 3-PHASE MOTOR 220-240/380-420 V

0,37 kW: 3-PHASE MOTOR 220-240/380-420 V

PRIUS D ATEX 2D/2G

50 Hz 3-PHASE

PRIUS D 50 Hz with 3-PHASE motor and ATEX certification has: PTFE diaphragm, aluminium enclosure, spring return mechanism, flow regulation, double ball check valve and liquid ends in Stainless Steel (AISI 316L).



FEATURES

- 3-phase motor
- PTFE diaphragm
- Aluminium enclosure
- Spring return mechanism
- Double ball check valve
- Stroke adjustment
- Stainless steel liquid ends (AISI 316)

pump head mod.	stroke length	60Hz	SPM	Pressure		Capacity		HOSES CONNECTION	2G	2D
				bar	psi	l/h	gph		Motor	Motor
NM	1,5 mm	010007	35	10	145	7	1,8	R1/2" G1/2"	0,18 kW	0,25 kW
	3 mm	010055	175	10	145	55	14,5			
		010027	87			27	7,1			
		010014	44			14	3,6			
TM	3 mm	010100	175	10	145	100	26,4	R3/4" G3/4"	0,37 kW	0,37 kW
		010050	87			50	13,2			
		010025	44			25	6,6			
	4 mm	007150	175	7	101,5	150	39,6	R3/4" G3/4"	0,37 kW	0,37 kW
		007075	87			75	19,8			
		007037	44			37	9,7			
	6 mm	005230	175	5	72,5	230	60,7	R3/4" G3/4"	0,37 kW	0,37 kW
		005115	87			115	30,3			
		005057	44			57	15			

PUMP HEADS



AISI 316

**Category 2**

Installation areas liable to be endangered by explosive atmospheres.

Pumps intended for use in areas in which explosive atmospheres are likely to occur.

	G (gas)	D (dust)
1999/92/EC	Zone 1	Zone 21

ATEX-approved pumps are for use in **potentially explosive atmospheres**.

Explosive atmospheres consists of air and combustible matter, such as gases, vapours, mists or dusts in which the explosion spreads after ignition.

We offer explosion-proof or dust-ignition-proof motors in accordance with the ATEX directive **2014/34/UE**.

ATEX-approved pumps can be used in areas (zones) classified according to the directive 1999/92/EC.

ATEX

II 2G c IIB T3, T4



II 2D IIIC T200°C, resp T135°C

MOTORS

0,18 kW: 3-PHASE MOTOR 440-480 V

0,25 kW: 3-PHASE MOTOR 440-480 V

0,37 kW: 3-PHASE MOTOR 440-480 V

PRIUS D ATEX 2D/2G

60 Hz 3-PHASE

PRIUS D 60 Hz with 3-PHASE motor and ATEX certification has: PTFE diaphragm, aluminium enclosure, spring return mechanism, flow regulation, double ball check valve and liquid ends in Stainless Steel (AISI 316L).



FEATURES

- 3-phase motor
- PTFE diaphragm
- Aluminium enclosure
- Spring return mechanism
- Double ball check valve
- Stroke adjustment

PUMP HEADS



PVDF



PP



AISI 316

pump head	stroke length	50Hz	SPM	Pressure		Capacity		PUMP HEAD			3G	3D
				bar	psi	l/h	gph	PVDF	AISI 316L	PP		
NM	3 mm	010060	175	10	145	60	15,8	1/2" 13 mm	R1/2" G1/2"	1/2" 13 mm	0,18	0,25
		010030	94			30	7,9					
		010024	70			24	6,3					
		010012	35			12	3,1					
	4 mm	010016	35	10	145	16	4,2					
TM	3 mm	010105	175	10	145	105	27,7	3/4" 13 mm	R3/4" G3/4"	3/4" 13 mm	0,37	0,37
		010056	94			56	14,7					
		010042	70			42	11					
		010021	35			21	5,5					
	4 mm	007160	175	7	101,5	160	42,2	3/4" 13 mm	R3/4" G3/4"	3/4" 13 mm	0,37	0,37
		007086	94			86	22,7					
		007064	70			64	16,9					
		007032	35			32	8,4					
	6 mm	005240	175	5	72,5	240	63,4	3/4" 18 mm	R3/4" G3/4"	3/4" 18 mm	0,37	0,37
		005128	94			128	33,8					
		005096	70			96	25,3					
		005048	35			48	12,6					
UM	4 mm	005350	175	5	72,5	350	92,4	G1-1/2" 30 mm	R1"	G1-1/2" 30 mm	0,37	0,37
		005188	94			188	49,6					
		005140	70			140	36,9					
		005070	35			70	18,4					
	5 mm	005440	175	5	72,5	440	116,2	G1-1/2" 30 mm	R1"	G1-1/2" 30 mm	0,37	0,37
		005236	94			236	62,3					
		005176	70			176	46,4					
		005088	35			88	23,2					
	6 mm	005530	175	5	72,5	530	140	G1-1/2" 30 mm	R1"	G1-1/2" 30 mm	0,37	0,37
		005284	94			284	75					
		005212	70			212	56					
		005106	35			106	28					
10 mm	005M00	175	5	72,5	1000	264,1	G1-1/2" 30 mm	R1"	G1-1/2" 30 mm	0,55	0,55	
	005520	94			520	137,3				0,37	0,37	
8 mm	005750	175	5	72,5	750	198,1	G1-1/2" 30 mm	R1"	G1-1/2" 30 mm	0,55	0,55	
10 mm	002M00	175	2	29	1000	264,1	G1-1/2" 30 mm	R1"	G1-1/2" 30 mm	0,37	0,37	
	004520	94	4	58	520	137,3						
	005390	70	5	72,5	390	103						
	005180	35			180	47,5						
8 mm	003750	175	3	43,5	750	198,1	G1-1/2" 30 mm	R1"	G1-1/2" 30 mm	0,37	0,37	
	005380	94	5	72,5	380	100,3						
	005290	70			290	76,6						
	005140	35			140	36,9						

**Category 3**

Installation areas liable to be endangered by explosive atmospheres. Pumps intended for use in areas in which explosive atmospheres only rarely occur.

	G (gas)	D (dust)
1999/92/EC	Zone 2	Zone 22

ATEX-approved pumps are for use in **potentially explosive atmospheres**.

Explosive atmospheres consists of air and combustible matter, such as gases, vapours, mists or dusts in which the explosion spreads after ignition.

We offer explosion-proof or dust-ignition-proof motors in accordance with the ATEX directive **2014/34/UE**.

ATEX-approved pumps can be used in areas (zones) classified according to the directive 1999/92/EC.

ATEX

II 3D Ex h IIIC T200°C, resp T135°C Dc



II 3G Ex h IIB T3, T4 Gc

MOTORS

0,18 kW: 3-PHASE MOTOR 1400G 50 Hz GAS
 0,37 kW: 3-PHASE MOTOR 1400G 50 Hz GAS
 0,25 kW: 3-PHASE MOTOR 1325G 50 Hz DUST
 0,37 kW: 3-PHASE MOTOR 1375G 50 Hz DUST

PRIUS D ATEX 3D/3G

50 Hz 3-PHASE

PRIUS D with 3-PHASE motor and ATEX certification has: PTFE diaphragm, aluminium enclosure, spring return mechanism, flow regulation, double ball check valve and liquid ends in different materials.



FEATURES

- 3-phase motor
- PTFE diaphragm
- Aluminium enclosure
- Spring return mechanism
- Double ball check valve
- Stroke adjustment

PUMP HEADS



PVDF



PP



AISI 316

pump head	stroke length	60Hz	SPM	Pressure		Capacity		PUMP HEAD			3G Motor kW	3D Motor kW
				bar	psi	l/h	gph	PVDF	AISI 316L	PP		
NM	3 mm	010055	175	10	145	55	14,5	1/2" 13 mm	R1/2" G1/2"	1/2" 13 mm	0,18	0,25
		010027	87			27	7,1					
		010014	44			14	3,6					
TM	3 mm	010105	175	10	145	100	26,4	3/4" 13 mm	R3/4" G3/4"	3/4" 13 mm	0,37	0,37
		010056	87			50	13,2					
		010042	44			25	6,6					
	4 mm	007160	175	7	101,5	150	39,6	3/4" 13 mm	R3/4" G3/4"	3/4" 13 mm	0,37	0,37
		007086	87			75	19,8					
		007064	44			37	9,7					
6 mm	005240	175	5	72,5	230	60,7	3/4" 18 mm	R3/4" G3/4"	3/4" 18 mm	0,37	0,37	
	005128	87			115	30,3						
	005096	44			57	15						
UM	4 mm	005350	175	5	72,5	335	88,4	G1-1/2" 30 mm	R1"	G1-1/2" 30 mm	0,37	0,37
		005188	87			165	43,5					
		005140	44			84	22,1					
	5 mm	005440	175	5	72,5	420	110,9	G1-1/2" 30 mm	R1"	G1-1/2" 30 mm	0,37	0,37
		005236	87			210	55,4					
		005176	44			105	27,7					
	6 mm	005530	175	5	72,5	505	133,4	G1-1/2" 30 mm	R1"	G1-1/2" 30 mm	0,37	0,37
		005284	87			250	66					
		005212	44			126	33,2					

**Category 3**

Installation areas liable to be endangered by explosive atmospheres. Pumps intended for use in areas in which explosive atmospheres only rarely occur.

	G (gas)	D (dust)
1999/92/EC	Zone 2	Zone 22

ATEX-approved pumps are for use in **potentially explosive atmospheres**.

Explosive atmospheres consists of air and combustible matter, such as gases, vapours, mists or dusts in which the explosion spreads after ignition.

We offer explosion-proof or dust-ignition-proof motors in accordance with the ATEX directive **2014/34/UE**.

ATEX-approved pumps can be used in areas (zones) classified according to the directive 1999/92/EC.

ATEX

II 3D Ex h III C T200°C, resp T135°C Dc



II 3G Ex h IIB T3, T4 Gc

MOTORS

0,18 kW: 3-PHASE MOTOR 1400G 50 Hz GAS
 0,37 kW: 3-PHASE MOTOR 1400G 50 Hz GAS
 0,25 kW: 3-PHASE MOTOR 1325G 50 Hz DUST
 0,37 kW: 3-PHASE MOTOR 1375G 50 Hz DUST

PRIUS D ATEX 3D/3G

60 Hz 3-PHASE

PRIUS D with 3-PHASE motor and ATEX certification has: PTFE diaphragm, aluminium enclosure, spring return mechanism, flow regulation, double ball check valve and liquid ends in different materials.



FEATURES

- 3-phase motor
- PTFE diaphragm
- Aluminium enclosure
- Spring return mechanism
- Double ball check valve
- Stroke adjustment

pump head	stroke length	50Hz	SPM	Pressure		Capacity		HOSES CONNECTION	Motor
				bar	psi	l/h	gph	SS	
LM AP	1.5 mm	100004	175	100	1450,3	4	1	R3/8"	0,37 kW
		100002	94			2	0,5		
		1001,5	70			1,5	0,3		
MM AP	2 mm	050017	175	50	725,1	17	4,4	R1/2"	0,37 kW
		050009	94			9	2,3		
		050005	70			5	1,3		
		05002,5	35			2,5	0,6		
NM AP	2 mm	030028	175	30	435,1	28	7,3	R1/2"	0,37 kW
		030015	94			15	3,9		
		030010	70			10	2,6		
		030005	35			5	1,3		
SM AP	4 mm	030076	175	30	435,1	76	20	R1/2"	0,37 kW
		030041	94			41	10,8		
		030030	70			30	7,9		
		030015	35			15	3,9		
TM AP	6 mm	020170	175	20	290	170	44,9	R3/4"	0,37 kW
		020091	94			91	24		
		020068	70			68	17,9		
		020034	35			34	8,9		

pump head	stroke length	60Hz	SPM	Pressure		Capacity		HOSES CONNECTION	Motor
				bar	psi	l/h	gph	SS	
LM AP	1.5 mm	100003	175	100	1450,3	3	0,7	R3/8"	0,37 kW
		1001,5	87			1,5	0,3		
MM AP	2 mm	050014	175	50	725,1	14	3,6	R1/2"	0,37 kW
		050007	87			7	1,8		
		0503,5	44			3,5	0,9		
NM AP	2 mm	030026	175	30	435,1	26	6,8	R1/2"	0,37 kW
		030013	87			13	3,4		
		030006	44			6	1,5		
SM AP	4 mm	030072	175	30	435,1	72	19	R1/2"	0,37 kW
		030036	87			36	9,5		
		030018	44			18	4,7		
TM AP	6 mm	020153	175	20	290	153	40,4	R3/4"	0,37 kW
		020076	87			76	20		
		020038	44			38	10		

PUMP HEADS



AISI 316



PRIUS D AP ATEX 2D/2G

HIGH PRESSURE 50/60 Hz 3-PHASE

Category 2

Installation areas liable to be endangered by explosive atmospheres.

Pumps intended for use in areas in which explosive atmospheres are likely to occur.

	G (gas)	D (dust)
1999/92/EC	Zone 1	Zone 21

ATEX-approved pumps are for use in **potentially explosive atmospheres**.

Explosive atmospheres consists of air and combustible matter, such as gases, vapours, mists or dusts in which the explosion spreads after ignition.

We offer explosion-proof or dust-ignition-proof motors in accordance with the ATEX directive **2014/34/UE**.

ATEX-approved pumps can be used in areas (zones) classified according to the directive 1999/92/EC.

ATEX



II 2G c IIB T3, T4



II 2D IIIC T200°C, resp T135°C

MOTORS

0,37 kW: 3-PHASE MOTOR 1400G 50 Hz GAS
 0,37 kW: 3-PHASE MOTOR 1660G 60 Hz GAS
 0,37 kW: 3-PHASE MOTOR 1375G 50 Hz DUST
 0,37 kW: 3-PHASE MOTOR 1375G 60 Hz DUST

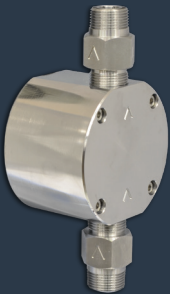
PRIUS D for HIGH PRESSURE with 3-PHASE motor and ATEX certification has: PTFE diaphragm, SS pump head, aluminium enclosure, spring return mechanism, flow regulation and double ball check valve.



FEATURES

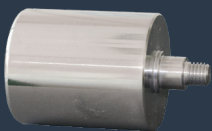
- Stainless steel (AISI420) plunger
- Aluminium enclosure
- Spring return mechanism
- Double ball check valve
- 3-phase motor

PUMP HEADS



AISI 316

PLUNGERS



AISI 316

stroke length	plunger	50Hz	SPM	Pressure		Capacity		HOSES CONNECTION	3G	3D
				bar	psi	l/h	gph			
15 mm	14	010024	175	10	145	24	6,3	R1/2"	0,18	0,25
		010013	94			13	3,4			
		010010	70			10	2,6			
		010005	35			5	1,3			
	25	010080	175	10	145	80	21,1	R1/2"	0,18	0,25
		010043	94			43	11,3			
		010032	70			32	8,4			
		010016	35			16	4,2			
	32	010130	175	10	145	130	34,3	R1/2"	0,18	0,25
		010070	94			70	18,4			
		010052	70			52	13,7			
		010026	35			26	6,8			
	40	010210	175	10	145	210	55,4	R3/4"	0,37	0,37
		010113	94			113	29,8			
		010084	70			84	22,1			
		010042	35			42	11			
	50	010320	175	10	145	320	84,5	R3/4"	0,37	0,37
		010172	94			172	45,4			
		010128	70			128	33,8			
		010064	35			64	16,9			
63	007508	175	7	101,5	508	134,1	R1"	0,55	0,55	
	007273	94			273	72,1		0,37	0,37	
	007203	70			203	53,6				
	007101	35			101	26,6				

stroke length	plunger	60Hz	SPM	Pressure		Capacity		HOSES CONNECTION	3G	3D
				bar	psi	l/h	gph			
15 mm	14	010023	175	10	145	23	6	R1/2"	0,18	0,25
		010011	87			11	2,9			
		010005	44			5	1,3			
	25	010076	175	10	145	76	20	R1/2"	0,18	0,25
		010038	87			38	10			
		010019	44			19	5			
	32	010126	175	10	145	126	33,2	R1/2"	0,18	0,25
		010063	87			63	16,6			
		010031	44			31	8,1			
	40	010195	175	10	145	195	51,5	R3/4"	0,37	0,37
		010097	87			97	25,6			
		010048	44			48	12,6			
	50	010300	175	10	145	300	79,2	R3/4"	0,37	0,37
		010150	87			150	39,6			
		010075	44			75	19,8			
	63	007469	175	7	101,5	469	123,8	R1"	0,55	0,55
		007234	87			234	61,8		0,37	0,37
		007117	44			117	30,9			



Category 2

Installation areas liable to be endangered by explosive atmospheres. Pumps intended for use in areas in which explosive atmospheres are likely to occur.

	G (gas)	D (dust)
1999/92/EC	Zone 1	Zone 21

ATEX-approved pumps are for use in **potentially explosive atmospheres**.

Explosive atmospheres consists of air and combustible matter, such as gases, vapours, mists or dusts in which the explosion spreads after ignition.

We offer explosion-proof or dust-ignition-proof motors in accordance with the ATEX directive **2014/34/UE**.

ATEX-approved pumps can be used in areas (zones) classified according to the directive 1999/92/EC.

ATEX

  II 2G c IIB T3, T4

  II 2D IIIC T200°C, resp T135°C

MOTORS

- 0,18 kW: 3-PHASE MOTOR 1400G 50 Hz GAS
- 0,37 kW: 3-PHASE MOTOR 1400G 50 Hz GAS
- 0,55 kW: 3-PHASE MOTOR 50 Hz GAS
- 0,25 kW: 3-PHASE MOTOR 1325G 50 Hz DUST
- 0,37 kW: 3-PHASE MOTOR 1375G 60 Hz DUST
- 0,55 kW: 3-PHASE MOTOR 50 Hz DUST
- 0,18 kW: 3-PHASE MOTOR 1660G 60 Hz GAS
- 0,37 kW: 3-PHASE MOTOR 1660G 60 Hz GAS
- 0,55 kW: 3-PHASE MOTOR 60 Hz GAS
- 0,25 kW: 3-PHASE MOTOR 1325G 60 Hz DUST
- 0,37 kW: 3-PHASE MOTOR 1375G 60 Hz DUST
- 0,55 kW: 3-PHASE MOTOR 60 Hz DUST

PRIUS P ATEX 2D/2G

50/60 Hz 3-PHASE

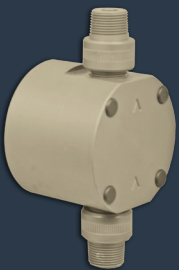
PRIUS P with 3-PHASE motor and ATEX certification has: SS plunger, aluminium enclosure, flow regulation and double ball check valve.



FEATURES

- Ceramic plunger
- Aluminium enclosure
- Spring return mechanism
- Double ball check valve
- 3-phase motor

PUMP HEADS



PP

PLUNGERS



CERAMIC
(SIALOX96)

stroke length	plunger	50Hz	SPM	Pressure		Capacity		HOSES CONNECTION	3G	3D
				bar	psi	l/h	gph	SS		
15 mm	14	010024	175	10	145	24	6,3	R1/2"	0,18	0,25
		010013	94			13	3,4			
		010010	70			10	2,6			
		010005	35			5	1,3			
	25	010080	175	10	145	80	21,1	R1/2"	0,18	0,25
		010043	94			43	11,3			
		010032	70			32	8,4			
		010016	35			16	4,2			
	32	010130	175	10	145	130	34,3	R1/2"	0,18	0,25
		010070	94			70	18,4			
		010052	70			52	13,7			
		010026	35			26	6,8			
	40	010210	175	10	145	210	55,4	R3/4"	0,37	0,37
		010113	94			113	29,8			
		010084	70			84	22,1			
		010042	35			42	11			
50	010320	175	10	145	320	84,5	R3/4"	0,37	0,37	
	010172	94			172	45,4				
	010128	70			128	33,8				
	010064	35			64	16,9				

stroke length	plunger	60Hz	SPM	Pressure		Capacity		HOSES CONNECTION	3G	3D
				bar	psi	l/h	gph	SS		
15 mm	14	010023	175	10	145	23	6	R1/2"	0,18	0,25
		010011	87			11	2,9			
		010005	44			5	1,3			
	25	010076	175	10	145	76	20	R1/2"	0,18	0,25
		010038	87			38	10			
		010019	44			19	5			
	32	010126	175	10	145	126	33,2	R1/2"	0,18	0,25
		010063	87			63	16,6			
		010031	44			31	8,1			
	40	010195	175	10	145	195	51,5	R3/4"	0,37	0,37
		010097	87			97	25,6			
		010048	44			48	12,6			
	50	010300	175	10	145	300	79,2	R3/4"	0,37	0,37
		010150	87			150	39,6			
		010075	44			75	19,8			



Category 3

Installation areas liable to be endangered by explosive atmospheres. Pumps intended for use in areas in which explosive atmospheres only rarely occur.

	G (gas)	D (dust)
1999/92/EC	Zone 2	Zone 22

ATEX-approved pumps are for use in **potentially explosive atmospheres**.

Explosive atmospheres consists of air and combustible matter, such as gases, vapours, mists or dusts in which the explosion spreads after ignition.

We offer explosion-proof or dust-ignition-proof motors in accordance with the ATEX directive **2014/34/UE**.

ATEX-approved pumps can be used in areas (zones) classified according to the directive 1999/92/EC.

ATEX

- II 3D Ex h III C T200°C, resp T135°C Dc
- II 3G Ex h IIB T3, T4 Gc

MOTORS

- 0,18 kW: 3-PHASE MOTOR 1400G 50 Hz GAS
- 0,37 kW: 3-PHASE MOTOR 1400G 50 Hz GAS
- 0,55 kW: 3-PHASE MOTOR 50 Hz GAS
- 0,25 kW: 3-PHASE MOTOR 1325G 50 Hz DUST
- 0,37 kW: 3-PHASE MOTOR 1375G 60 Hz DUST
- 0,55 kW: 3-PHASE MOTOR 50 Hz DUST
- 0,18 kW: 3-PHASE MOTOR 1660G 60 Hz GAS
- 0,37 kW: 3-PHASE MOTOR 1660G 60 Hz GAS
- 0,55 kW: 3-PHASE MOTOR 60 Hz GAS
- 0,25 kW: 3-PHASE MOTOR 1325G 60 Hz DUST
- 0,37 kW: 3-PHASE MOTOR 1375G 60 Hz DUST
- 0,55 kW: 3-PHASE MOTOR 60 Hz DUST

PRIUS P ATEX 3D/3G

50/60 Hz 3-PHASE

PRIUS P with 3-PHASE motor and ATEX certification has: SS plunger, aluminium enclosure, flow regulation and double ball check valve.



INSTALLATION KITS



A. INSTALLATION KIT

included without extraprise

- 1/2" foot filter with 13 mm (int. diam.) hose fitting
- 3/4" injection valve
- PVDF delivery hose (13X16 PVDF or 12x18 PVC)
- PVDF suction hose (13X16 PVDF or 12x18 PVC)



B. INSTALLATION KIT

- 1 1/2" foot filter with 18 mm (int. diam.)
- hose fitting (G1 1/2" - 18 mm)



C. INSTALLATION KIT

- 1 1/2" foot filter with 32 mm (int. diam.)
- hose fitting (G1 1/2" - 32 mm)
- 1 1/2" injection valve

PR1US

ACCESSORIES



PRESSURE / SECURITY VALVE

The pressure/security valve, directly controlled by the medium, is used in technical processing plants keep constant working pressures on the primary side. The pressure/security valve can also be used as an overflow valve to prevent pressure peaks. In this case, the pressure/security valve is fitted in a bypass line.

Operating Pressure: 0,5-10 bar

Opening Pressure: 0,3 bar



- Delivery hose
18x22 PVDF

- Suction hose
18x25 PE



PULSATION DAMPENERS

SOIM2.5 - SOIM5

PVC pulsation dampener without membrane.

FKM B o-ring.

Available in 2,5 liter (SIOM2.5)

and 5 liter (SOIM5).



- Delivery hose
32x42 PVC (meshed)

- Suction hose
32x40 PVC (spiral hose)



20200200

EMEC SRL Via Donatori di Sangue, 1 - 02100 Rieti ITALY
Tel. +39 - 07462284 1 - Fax +39 - 07462284 2
info@emecpumps.com - www.emecpumps.com